

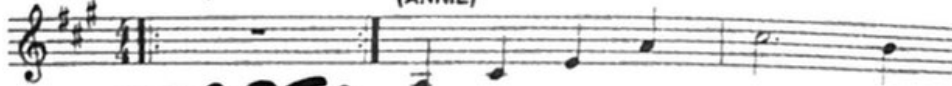
(From p. 30 in libretto)

3 Maybe

SING ALL PARTS

ANNIE: I know. Somewhere.

Sweetly (♩ = 96-100) (ANNIE)



START:

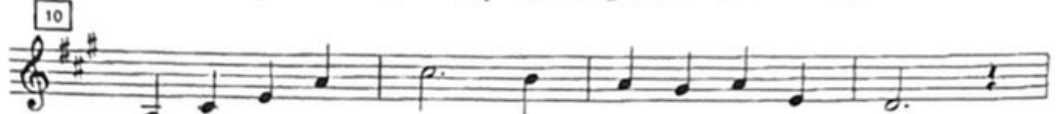
May - be far a - way or



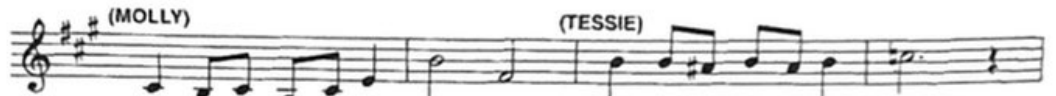
may - be real near - by, he may be pour-in' her



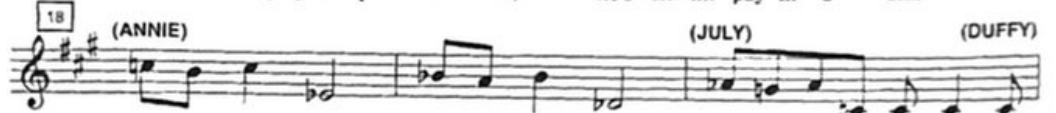
cof - fee, she may be straight-'nin' his tie!



May - be in a house all hid - den by a hill,



she's sit-tin' play-in' pi - a - no, he's sit-tin' pay-in' a bill!



Bet-cha they're young. Bet-cha they're smart. Bet they col-lect— things like



ash-trays and art!— Bet-cha they're good.— Why should-n't they be?—



Their one mis-take was giv - in' up me!— So,

Book Copyright © 1977 by Thomas Meehan
 Music and Lyrics Copyright © 1977, 1978 by Edwin H. Morris & Co.
 A Division of MPL Communications, Inc. and Charles Strouse
 International Copyright Secured. All Rights Reserved.
 Annie, Broadway Junior Libretto/Vocal Book v. 12/11/97 © 1995, 1997 by MTI Enterprises, Inc.

27
 may - be now it's time, and may - be when I wake.

(ANNIE & ORPHANS) 34 rit.
 31 they'll be there, call - in' me "Ba - by," may - be.

END

a tempo 15
 35

50 (ANNIE)
 Bet - cha he reads Bet - cha she sews. May - be he's made me a

53
 clo - set of clothes! - May - be they're strait, - as straight as a line. -

56
 Don't real - ly care, as long as they're mine! - So,

59
 may - be now this prayer's the last one of its kind:

63
 won't you please come get your "Ba - by"

2 (ANNIE & ORPHANS) rit.
 66
 may - be?

(Script resumes on p. 32 in libretto)

4 Annie's Escape

TACET